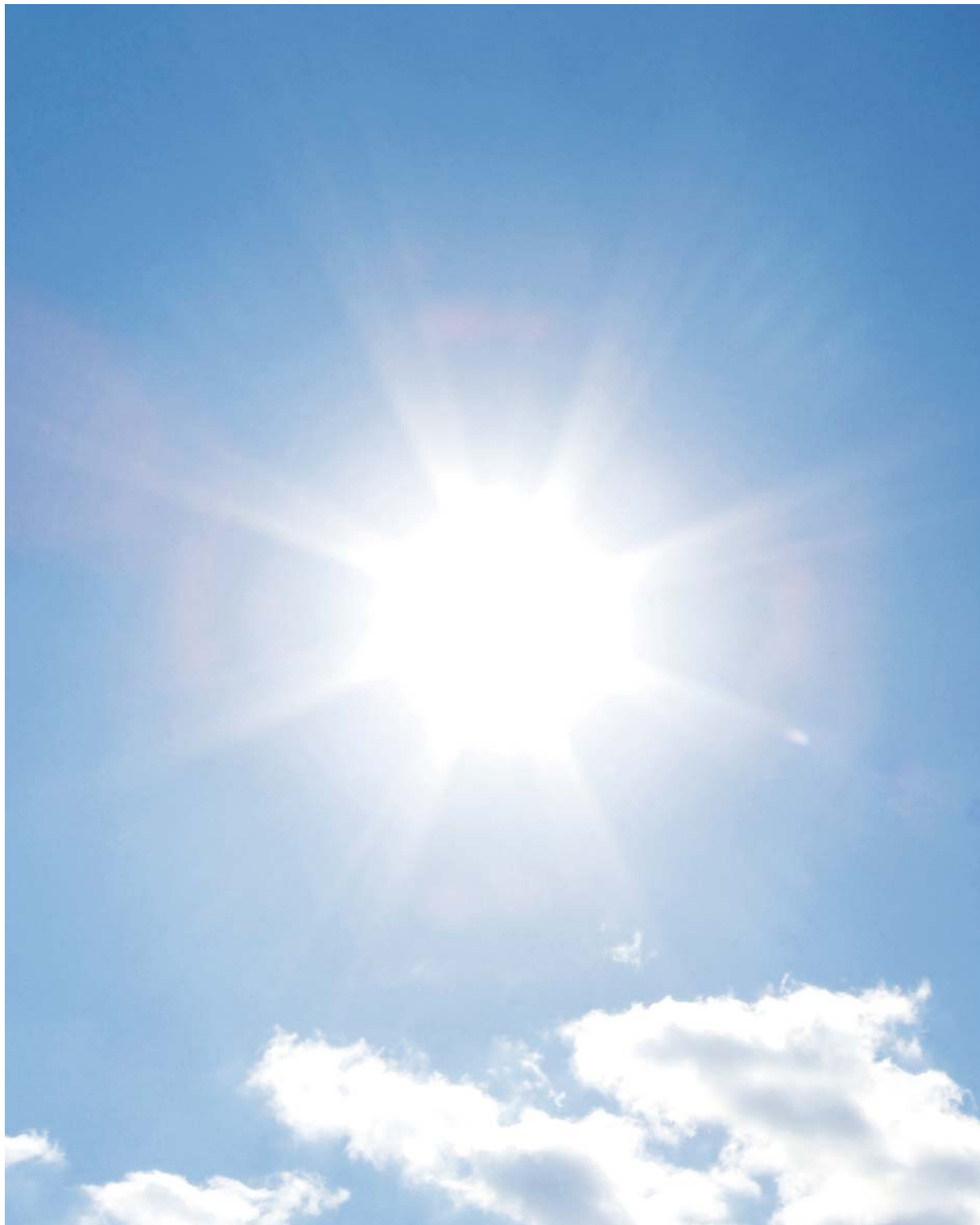




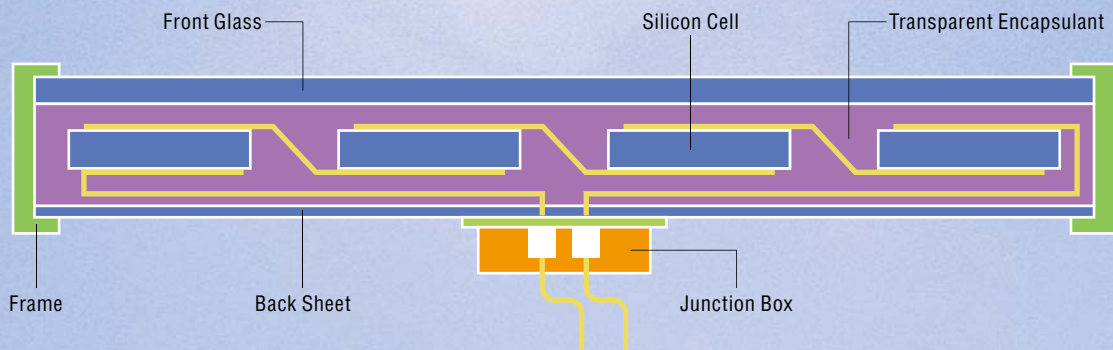
Shin-Etsu Silicone

Silicone Products for Photovoltaic Modules



Shin-Etsu Silicone Materials are utilized for Photovoltaic Module applications to improve their reliability and stable operation due to their unique features.

■ Application



Potting

KE-200, KE-200F, KE-210, KE-210F

Sealing

KE-45, KE-4828, KE-220

Transparent Encapsulant

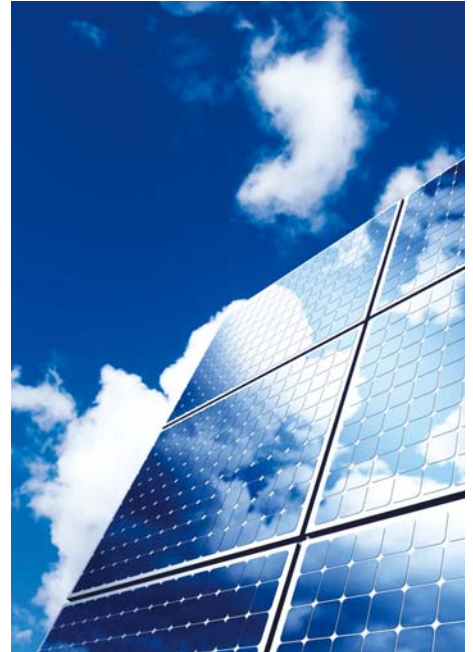
X-32-3038A/B

Shin-Etsu Silicone potting materials KE-200 / KE-210 have excellent weather resistance and heat resistance in the airtight condition.

In addition to the general silicone features, KE-200 / KE-210 are especially fast curing room temperature. Suitable for automated dispensing, KE-200 / KE-210 are ideal for mass production.

■ Features

- Fast Cure at room temperature, excellent deep section cure.
- Easy handling due to 10:1 mixing ratio.
- Excellent heat resistance in airtight condition
 - No reversion.
- Excellent adhesion strength to various substrates.
- Suitable for Automated Dispensing.
- Panel can be turned over within 60min.
- Ideal for mass production.
- Reduced low-molecular-weight siloxane
 - ΣD_3 to D_{10} below 300ppm.
- UL94 HB approved (KE-200, KE-200F).
- UL94 V-0 equivalent (KE-210, KE-210F).



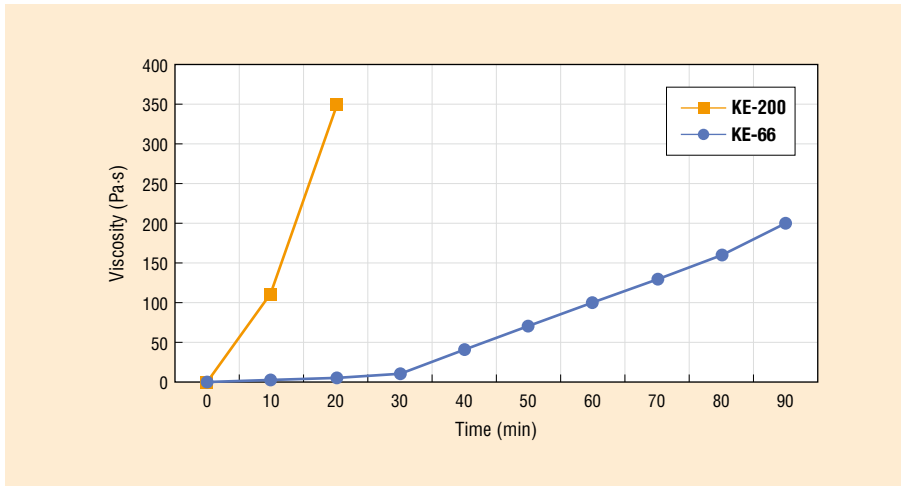
■ General Properties

Parameter		Grade	KE-200	KE-200F	KE-210	KE-210F
Before Curing	Appearance	Color	Colorless to light yellow	Colorless to light yellow	Black	Black
		Transparency	Translucent	Translucent	—	—
	Viscosity at 23°C	Pa·s	1.85	1.85	4.0	4.0
	Density at 23°C	g/cm ³	1.01	1.01	1.29	1.29
	Catalyst		CX-200	CX-200	CAT-210	CAT-210
	Mixing Ratio by weight		100 : 10	100 : 10	100 : 10	100 : 10
Pot life: Flow at 23°C	min	35	15	25	15	
After Curing*	Hardness Durometer A		23	23	35	35
	Tensile Strength	MPa	0.52	0.52	0.8	0.8
	Elongation at break	%	140	140	90	90
	Volume Resistivity	TΩ·m	60	60	10	10
	Dielectric Breakdown Strength 1mm	kV	26	26	26	26
	Dielectric Constant (ε) 50Hz		2.9	2.9	—	—
	Dielectric Dissipation Factor (δ) 50Hz		2×10 ⁻⁴	2×10 ⁻⁴	—	—
	Thermal Conductivity	W/m·K	0.21	0.21	0.5	0.5
Flammability UL94		HB	HB	V-0 (2mm) equivalent	V-0 (2mm) equivalent	

* Curing condition: After 3 days cure at 23°C ± 2°C / 50 ± 5%RH

(Not specified values)

Comparison on curing time of KE-200 with a conventional product (KE-66)



Property changes after various durability tests for KE-200

■ Mechanical Property Change

Parameter	Condition	Initial	85°C / 85% / 1,000h	-40°C / +85°C 200 cycles
Hardness Durometer A		23	14	21
Elongation at break	%	140	170	100
Tensile Strength	MPa	0.50	0.32	0.32

(Not specified values)

■ Electrical Property Change

Parameter	Condition	Initial	85°C / 85% / 1,000h
Volume Resistivity	TΩ·m	60	60
Dielectric Breakdown Strength 1mm	kV	26	29

(Not specified values)

■ Adhesion Property Change

Parameter	Condition	Initial	85°C / 85% / 1,000h
Lap Shear Strength	Al	0.42	0.60
	ABS	0.24	0.25
	m-PPO	0.16	0.18

(Not specified values)

Packaging

- KE-200, KE-200F (Main component) 1kg Tin can / 18kg Pail
- CX-200 (Catalyst) 100g Glass bottle / 900g Tin can
- KE-210, KE-210F (Main component) 1kg Tin can / 20kg Pail
- CAT-210 (Catalyst) 100g Glass bottle / 1kg Tin can

* Caution
 Chemical composition in CX-200 hydrolyzes when reacts with moisture.
 Upon storage, please avoid high temperature,
 high humidity and direct sunlight. Once open, please use all.

Sealing between Junction Box/Back Sheet and Water Proof Sealing for Frame

KE-45
KE-4828
KE-220

Shin-Etsu Silicone KE-45, KE-4828 and KE-220 have excellent adhesive properties to back sheet materials such as PVF and PET.

They maintain good elasticity over a wide temperature range (-40 to 180°C) with excellent weatherability and electrical insulation properties.

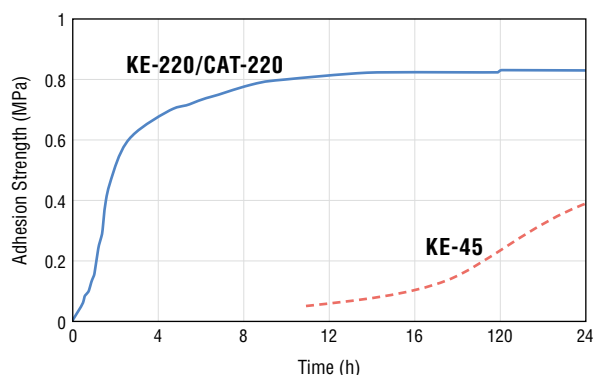
■ Features

- One-component, room temperature cure (KE-45, KE-4828).
- Two-component, room temperature, super fast cure (KE-220).
- Strong adhesion to back sheet of PV module.
- Excellent weatherability.
- Flexible Silicone Rubber from -40°C to +180°C.
- Excellent electrical properties.
- UL94 HB approved (KE-45, KE-4828).
- UL94 HB equivalent (KE-220).



— KE-220/CAT-220 (Two-component sealant)
100% Cohesive failure after 4 hours.
- - - KE-45 (One-component sealant)
60% of KE-45-W was uncured after 24 hours.

Adhesion Strength (Cohesion Failure, PET film/Aluminum)



■ General Properties

Parameter		Grade	KE-45	KE-4828	KE-220
Before Curing	Appearance	Color	White, Black, Transparent	White, Black	White
		Consistency	Paste	Paste	Paste
	Curing System		Oxime	Alcohol	Alcohol
	Catalyst		—	—	CAT-220
	Mixing Ratio by volume		—	—	100:10
	Tack free time	min	6	6	10
	Pot life		—	—	20
After Curing*	Density at 23°C	g/cm ³	1.05	1.40	1.43
	Hardness Durometer A		30	35	54
	Tensile Strength	MPa	2.0	1.6	1.7
	Elongation at break	%	350	350	160
	Volume Resistivity	TΩ·m	5.0	1.1	—
	Dielectric Breakdown Strength 1mm	kV	23	27	—
	Lap Shear Strength	MPa	1.0 (AL/AL)	1.0 (AL/AL)	1.5 (Glass/Glass)
	Flammability UL94		HB	HB	HB equivalent

* Curing condition: KE-45, KE-4828: 23°C±2°C / 50±5%RH x 7 days
KE-220: 23°C±2°C / 50±5%RH x 3 days

(Not specified values)

Durability Test Results

● Test Condition

Substrate Used: PVF, PET

Thermal Cycle Test: -40°C↔85°C/200 cycles, holding time in each temp. at 30min.

Damp-Heat test: 85°C/85%RH/1,000h

Test Items: Lap Shear Strength, Cohesion Failure

■ Lap Shear Strength MPa (Cohesion Failure %)

Grade \ Condition	PVF			PET		
	Initial	-40°C↔85°C 200 cycles	85°C/85% 1,000h	Initial	-40°C↔85°C 200 cycles	85°C/85% 1,000h
KE-45-W	0.99 (100)	0.94 (100)	0.50 (100)	0.95 (90)	0.83 (100)	0.53 (100)
KE-4828-W	0.98 (100)	1.09 (100)	0.77 (90)	0.96 (90)	1.26 (100)	0.66 (100)

(Not specified values)

Packaging

- **KE-45** 330ml Cartridge / 20 l Pail
- **KE-4828** 310ml Cartridge / 20 l Pail
- **KE-220 (Main component)** 1kg Tin can / 25kg Pail
- **CAT-220 (Catalyst)** 100g Glass bottle / 1kg Tin can

Handling precautions

1. KE-45 and KE-4828 react with moisture in the air and begin to cure from the surface. During curing, small amount of Methanol (KE-4828, KE-220), Oxime (KE-45), or Acetone (KE-200) is gradually generated. Consequently, the cure speed will vary according to the temperature and humidity of the environment.
2. Store between 1°C to 25°C, out of direct sunlight.
3. RTV rubbers may discolor over time, but this does not negatively affect the characteristic properties.
4. When using an air gun, be sure to set the pressure at a safe and proper level. Pressure should generally not exceed 0.2-0.3MPa.
5. When applying KE-200 and KE-220, use of an automatic two-component dispenser is recommended (KE-45, KE-4828).

Shin-Etsu Silicone X-32-3038A/B is a transparent Silicone encapsulant that has an excellent light transmittance especially around UV area.

After X-32-3038A/B cures, it forms a soft elastmer that can absorb the inner stress of various devices.

■ Features

- High transparent, two-component material with 100:100 mixing ratio.
- Good adhesion to the glass and metals.
- Excellent light transmittance over the visible light spectrum.



■ General Properties

Parameter		Grade	X-32-3038	
			A	B
Before Curing	Appearance (Color)		Light yellow, Transparent	Translucent
	Viscosity	mPas·s	1,350	800
	Viscosity after A/B mixed	mPas·s	1,100	
After Curing*	Density at 25°C	g/cm ³	0.98	
	Hardness Ascar C		45	
	Tensile Strength	MPa	0.4	
	Lap Shear Strength*1	MPa	1.15 (Glass/Glass)	
	Light Transmissivity*2 450nm	%	98.9	

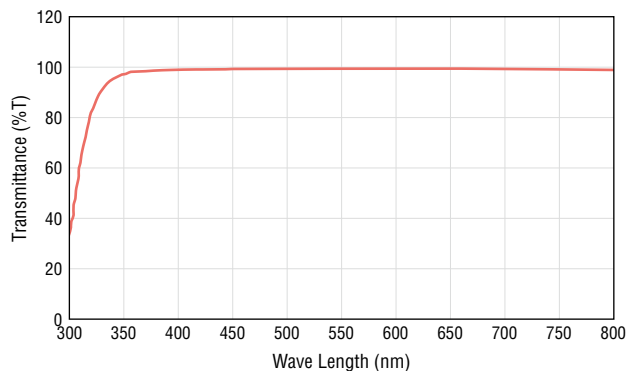
* Curing Condition: 80°C /30min in the oven

(Not specified values)

*1 2 mm thickness sheet

*2 0.3 mm thickness sheet

Light transmittance
X-32-3038A/B 0.3mm



Packaging

- X-32-3038A/B 1kg Tin can / 20kg Pail

Safety and hygiene

1. Be sure to provide adequate ventilation when using RTV rubbers and any solvents. If you experience any unpleasant symptoms please move to an area with fresh air.
2. Uncured RTV rubbers may irritate skin and mucous membranes, so avoid eye contact and prolonged skin contact. In case of accidental eye contact, flush with water for at least 15 minutes and seek a physician. In case of skin contact, immediately wipe off with a dry cloth and wash with soapy water. Contact lens wearers should exercise adequate caution; if uncured RTV rubbers enter the eye, the contact lens may become bonded to the eye.
3. When using, be careful not to rub eyes with hands. Please take appropriate precautions such as wearing safety glasses.
4. Keep out of reach of children.
5. KE-45 releases methyl ethyl ketoxime (MEKO) when curing. Therefore be sure to provide adequate ventilation when using. If you feel dizziness, move to an area with fresh air.
6. Please read the Material Safety Data Sheet (MSDS) before use. MSDS can be obtained from our Sales Department.

Silicone Division Sales and Marketing Department IV

6-1, Ohtemachi 2-chome, Chiyoda-ku, Tokyo, Japan

Phone : +81-(0)3-3246-5152 Fax : +81-(0)3-3246-5362

Shin-Etsu Silicones of America, Inc.

1150 Damar Drive, Akron, OH 44305, U.S.A.

Phone : +1-330-630-9860 Fax : +1-330-630-9855

Shin-Etsu Silicones Europe B. V.

Bolderweg 32, 1332 AV, Almere, The Netherlands

Phone : +31-(0)36-5493170 Fax : +31-(0)36-5326459

Shin-Etsu Silicone Taiwan Co., Ltd.

Hung Kuo Bldg. 11F-D, No. 167, Tun Hua N. Rd.,

Taipei, 10549 Taiwan, R.O.C.

Phone : +886-(0)2-2715-0055 Fax : +886-(0)2-2715-0066

Shin-Etsu Silicone Korea Co., Ltd.

Danam Bldg., 9F, 120, Namdaemunno5(o)-ga,

Jung-gu, Seoul 100-704, Korea

Phone : +82-(0)2-775-9691 Fax : +82-(0)2-775-9690

Shin-Etsu Singapore Pte. Ltd.

4 Shenton Way, #10-03/06, SGX Centre II, Singapore 068807

Phone : +65-6743-7277 Fax : +65-6743-7477

Shin-Etsu Silicones (Thailand) Ltd.

7th Floor, Harindhorn Tower, 54 North Sathorn Road,

Bangkok 10500, Thailand

Phone : +66-(0)2-632-2941 Fax : +66-(0)2-632-2945

Shin-Etsu Silicone International Trading (Shanghai) Co., Ltd.

29F Junyao International Plaza, No.789,

Zhao Jia Bang Road, Shanghai, China

Phone : +86-(0)21-6443-5550 Fax : +86-(0)21-6443-5868

- The data and information presented in this catalog may not be relied upon to represent standard values. Shin-Etsu reserves the right to change such data and information, in whole or in part, in this catalog, including product performance standards and specifications without notice.
- Users are solely responsible for making preliminary tests to determine the suitability of products for their intended use. Statements concerning possible or suggested uses made herein may not be relied upon, or be construed, as a guaranty of no patent infringement.
- The silicone products described herein have been designed, manufactured and developed solely for general industrial use only; such silicone products are not designed for, intended for use as, or suitable for, medical, surgical or other particular purposes. Users have the sole responsibility and obligation to determine the suitability of the silicone products described herein for any application, to make preliminary tests, and to confirm the safety of such products for their use.
- Users must never use the silicone products described herein for the purpose of implantation into the human body and/or injection into humans.
- Users are solely responsible for exporting or importing the silicone products described herein, and complying with all applicable laws, regulations, and rules relating to the use of such products. Shin-Etsu recommends checking each pertinent country's laws, regulations, and rules in advance, when exporting or importing, and before using, the products.
- Please contact Shin-Etsu before reproducing any part of this catalog.
Copyright belongs to Shin-Etsu Chemical Co., Ltd.



The Development and Manufacture of Shin-Etsu Silicones are based on the following registered international quality and environmental management standards.

Gunma Complex ISO 9001 ISO 14001
(JCQA-0004 JCQA-E-0002)

Naoetsu Plant ISO 9001 ISO 14001
(JCQA-0018 JCQA-E-0064)

Takefu Plant ISO 9001 ISO 14001
(JQA-0479 JQA-EM0298)

<http://www.silicone.jp/>