

# KSG-045Z

## Silicone Elastomer

### Silicone Elastomer

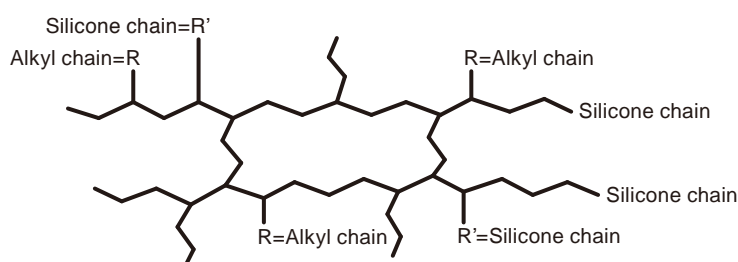
- **Features & Advantages**
  - Silky skin feeling
  - Thickening agent
  - Good compatibility with organic oils, esters and silicones
  - Matte effect

- **Applications**
  - Skin care
  - Make-up

- **Percentage of use** 0.5-100 %

- **INCI name** CYCLOPENTASILOXANE (AND)  
LAURYL POLYDIMETHYLSILOXYETHYL DIMETHICONE/  
BIS-VINYLDIMETHICONE CROSSPOLYMER

#### ■ Structure



#### ■ Characteristics

Properties	Unit	Values	Standard method / condition
Appearance (color)	—	Colorless to light yellow	Visual observation
Appearance (transparency)	—	Slightly haze to cloudiness	Visual observation
Appearance (form)	—	Paste to gel	Visual observation
Percentage of active raw material	%	15-25	
Worked penetration	—	350	JIS K 2220
Specific gravity	—	—	Densimeter
Refractive index	—	1.401	Refractometer

(Not specific values)

# KSG-045Z

### ■ Solubility / compatibility

KF-995 (Cyclopentasiloxane)	B
KF-96A-6cs (Dimethicone)	O
Isododecane	O
Mineral oil	O
Squalane	O
Isotridecyl Isononanoate	O
Triethylhexanoin	O

B : Base oil  
O : Optional amount

### ■ Processing (How to use)

The product is ready to use. In case of solidification, please apply high shearing before use.

The product must be pre-dispersed in an adequate silicone or oil phase.

### ■ Packaging

16 kg can

### ■ Storage

The silicone products may deteriorate when it comes in contact with heat, light, acid, alkaline, etc.

Be sure to seal tightly and store in a cool dark place away from heat and flame.

### ■ Safety

Please consult our SDS.

### Warning to users

- The data and information presented in this document may not be relied upon to represent standard values. Shin-Etsu reserves the right to change such data and information, in whole or in part, in this document, including product performance standards and specifications without notice.
- Users are solely responsible for making preliminary tests to determine the suitability of products for their intended use. Statements concerning possible or suggested uses made herein may not be relied upon, or be construed, as a guaranty of no patent infringement.
- The silicone products described herein have been designed, manufactured and developed solely for general industrial use only; such silicone products are not designed for, intended for use as, or suitable for, medical, surgical or other particular purposes. Users have the sole responsibility and obligation to determine the suitability of the silicone products described herein for any application, to make preliminary tests, and to confirm the safety of such products for their use.
- Users must never use the silicone products described herein for the purpose of implantation into the human body and/or injection into humans.
- Users are solely responsible for exporting or importing the silicone products described herein, and complying with all applicable laws, regulations, and rules relating to the use of such products. Shin-Etsu recommends checking each pertinent country's laws, regulations and rules in advance, when exporting or importing, and before using, the products.
- Please contact Shin-Etsu before reproducing any part of this document.

# KSG-045Z